

VOLUME 1

2024 EU NEW PRODUCTS

THE ART OF PRESENTATION



THE ART OF PRESENTATION

You're not just setting a table. You're creating an experience, telling a story, sharing a culture - and food is at the heart of it. Food brings people together and connects them to tradition and inspiration.

At Steelite, we believe that tableware should do more than serve your food - it should serve your vision. We design, craft and curate the very best in tableware for chefs and concepts across the globe.

Partnering to create an unmatched range of inspired tabletop experiences where shape, colour, texture, light and weight combine to feed the senses. Helping our customers set the stage for their menus and their brands. Elevating presentation to an art. Steelite. The Art of Presentation.

who we are

Steelite International is a world leading manufacturer and supplier of award winning tabletop, buffet and lighting solutions for the hospitality industry. Listening to our customers has allowed us to offer innovative solutions in china, metal, glass, wood and melamine. We are committed to offering the best in technology and design while minimising our effect on the environment. Our stability and reputation in the industry has provided us with both a diverse client list and a comprehensive channel of operations. Customer satisfaction is our top priority, which requires dedication, commitment, and a passion for achieving a level of excellence far exceeding expectations.

CONTENTS

steelite distinction

Alina6

steelite performance

Amari8
 Petra10
 Messina12
 Asteria14
 Nyx16
 Nordic18

ceramic tableware

FOLIO

Concorde20
 Terrace22
 ROBERT GORDON Forager24

cutlery

ROBERT WELCH Fiddle26
 ADAM SIMHA Steak Knives28

accessories

LAMPA Lighting Solutions29

buffet

D.W. HABER Fusion30
 CREATIONS
 Cereal Dispenser31
 Hydraulic Chafers31

melamine

CREATIONS
 Craft Arctic32
 Blue Dapple33
 Quarry34

luxury bone china

WILLIAM EDWARDS

Quill36
 Quanta38
 Ranges now in stock40
 Whiteware42



FOLIO CONCORDE 20

New Products



STEELITE DISTINCTION ALINA 6



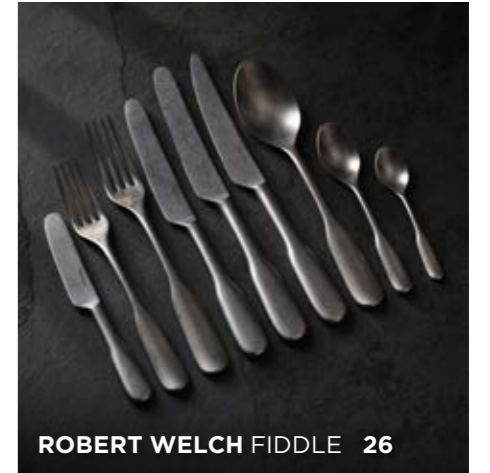
STEELITE PERFORMANCE AMARI 8



FOLIO CONCORDE 20



FOLIO TERRACE 22



ROBERT WELCH FIDDLE 26



ADAM SIMHA STEAK KNIVES 28



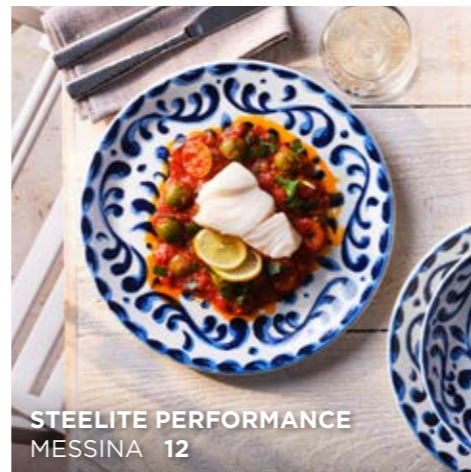
LAMPA LIGHTING SOLUTIONS 29



D.W. HABER FUSION 30



STEELITE PERFORMANCE PETRA 10



STEELITE PERFORMANCE MESSINA 12



CREATIONS CEREAL DISPENSER 31



CREATIONS MELAMINE CRAFT ARCTIC 32



CREATIONS MELAMINE BLUE DAPPLE 33



STEELITE PERFORMANCE NORDIC 14



WILLIAM EDWARDS QUILL 36



WILLIAM EDWARDS QUANTA 38



Alina combines two strong and complimentary aesthetics; The simplicity, linearity and restraint of Japanese design coupled with an easy-going, approachable, and casual style that embodies the Scandinavian way of life.

The Alina embossment draws the eye towards the centre of the piece, giving gravitas and focus to Chef's creativity. Alina delivers an interplay of light and line which provides a relaxed and contemporary platform for today's banqueting and upscale dining.



Gourmet Plate Large Well
C1220 28.5cm (11¼") 19.0cm Well



Gourmet Plate Medium Well
C1221 28.5cm (11¼") 15.0cm Well



Gourmet Plate Small Well
C1222 28.5cm (11¼") 12.2cm Well



Gourmet Coupe Plate
C1223 28.0cm (11")



Gourmet Plate Accent
C1227 20.25cm (8")



Mid Rim Plate
C1230 30.0cm (11¾")
C1231 27.0cm (10½/₈")
C1232 25.5cm (10")



C1233 23.0cm (9")
C1234 20.25cm (8")
C1235 15.75cm (6¼")



Oval Plate
C1240 33.0cm (13")



Gourmet Rimmed Coupe Bowl
C1224 28.5cm (11¼")



Gourmet Deep Coupe Bowl
C1225 28.0cm (11")



Gourmet Deep Rimmed Bowl
C1226 28.5cm (11¼")



Mid Rim Bowl
C1260 24.0cm (9½") 34.0cl (12oz)



Bowl
C1262 15.25cm (6") 72.5cl (25½oz)
C1263 13.0cm (5¼") 48.3cl (17oz)
C1264 10.0cm (4") 20.0cl (7oz)
Fits C1242



Oatmeal Bowl
C1261 16.5cm (6½") 51.0cl (18oz)



Soup Cup Unhandled Stacking
C1252 28.5cl (10oz) Fits C1242



Mug
C1253 28.5cl (10oz) Fits C1242



Cup
C1251 Cup 22.75cl (8oz) Fits C1242
C1258 Cup 8.5cl (3oz) Fits C1243



Cup Stacking
C1250 21.25cl (7.5oz) Fits C1242
C1255 8.5cl (3oz) Fits C1243



Saucer
C1242 15.25cm (6")
C1243 11.75cm (5")



Beverage Pot
C1256 60.0cl (21oz)
C1257 Beverage Pot Lid

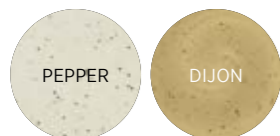


Jug
C1254 14.25cl (5oz) Fits C1242



Stripping back from heavy reactive glazes, Amari brings a light design to the table. Delicate flecks of glaze decorate gently curving profiles, providing a simple element to complement a variety of menus. This collection is designed to combine with Petra which brings an organic feel when mixed together.

Patterns Available



Nordic Coupe Plate
0639 28.0cm (11")



Nordic Coupe Plate
0634 25.25cm (10")



Nordic Coupe Plate
0631 20.25cm (8")



Nordic Coupe Plate
0630 16.5cm (6½")



Nordic Tray
0640 34.0cm (13½")



Nordic Tray
0641 29.0cm (11½")



Nordic Tray
0642 24.0cm (9½")



Bowl
0484
17.5cm (7") 98.0cl (34½oz)



Bowl
0482
15.5cm (6⅞") 65.5cl (23oz)



Bowl
0481
13.5cm (5¼") 45.5cl (16oz)



Bowl
0480
11.0cm (4½") 34.0cl (12oz)



Tulip Bowl
0538
7.0cm (2¾") 5.68cl (2oz)



City Mug
0623 34.0cl (12oz) Fits
Saucers X0042, 0158, 0218



City Mug
0624 28.5cl (10oz) Fits
Saucers X0042, 0158, 0218



City Mug
0626 11.4cl (4oz) Fits
Saucers X0043, 0165

Stocked in the European Warehouse.

Due to the unique hand decorated design of this range each item will be slightly different in colour and texture.

PEPPER: 1215 DIJON: 1216



dune



Coupe Plate
0544 28.0cm (11")



Coupe Plate
0566 25.25cm (10")



Coupe Plate
0567 20.25cm (8")



Coupe Plate
0568 15.25cm (6")



Coupe Bowl
0569
25.25cm (10") 120.25cl (42.3oz)



Coupe Bowl
0570
21.6cm (8½") 83.5cl (29.4oz)

Inspired by nature's free forming lines, Petra introduces an organic aesthetic. The earthly design is lifted by the glaze applied, bringing a contemporary feel to the collection.



Evident from its namesake, a port in Sicily, Messina provides a bright, bold, and energetic surface perfect for outdoor dining or bringing the Mediterranean feel to the table. All pieces are freezer, dishwasher and microwave proof, making a practical yet stunning collection.



blue



Coupe Plate
0544 28.0cm (11")



Coupe Plate
0566 25.25cm (10")



Coupe Plate
0567 20.25cm (8")



Coupe Plate
0568 15.25cm (6")



Coupe Bowl
0569
25.25cm (10") 120.25cl (42.3oz)



Coupe Bowl
0570
21.6cm (8½") 83.5cl (29.4oz)



elegant, sophisticated and bold

Taking inspiration from early Greek mythology, Asteria is the goddess of stars, adding a sweeping bold, design to the tabletop. When paired with Nyx, the goddess of night, they form an interesting set of light and dark, that proves to be elegant, sophisticated, and bold.



Nordic Tray **NEW**
0640 34.0cm (13½")



Nordic Tray **NEW**
0641 29.0cm (11½")



Nordic Tray **NEW**
0642 24.0cm (9½")



Nordic Coupe Plate
0639 28.0cm (11") **NEW**
0634 25.25cm (10")
0631 20.25cm (8")
0630 16.5cm (6½")



Stack Plate
0635 28.5cm (11¼")
0636 25.5cm (10")
0637 20.25cm (8")
Fits 0559 as a Lid
0638 16.5cm (6½")
Fits 0560 as a Lid



Round Stacking Tray
0559 20.25cm (8") Fits 0637
0560 16.5cm (6½") Fits 0638



Bowl
0484 17.5cm (7") 98.0cl (34½oz)



Bowl
0482 15.5cm (6¼") 65.5cl (23oz)



Bowl
0481 13.5cm (5¼") 45.5cl (16oz)



Bowl
0480 11.0cm (4½") 34.0cl (12oz)



City Mug
0623 34.0cl (12oz)
Fits X0042, 0158, 0218



City Mug
0624 28.5cl (10oz)
Fits X0042, 0158, 0218

Stocked in the European Warehouse.

Due to the unique hand decorated design of this range each item will be slightly different in colour and texture.

PATTERN CODE: 1206



elegant, sophisticated and bold

Taking inspiration from early Greek mythology, Nyx is the goddess of night, adding a sweeping bold, design to the tabletop. When paired with Asteria, the goddess of stars, they form an interesting set of dark and light, that proves to be elegant, sophisticated, and bold.



Nordic Tray **NEW**
0640 34.0cm (13½")



Nordic Tray **NEW**
0641 29.0cm (11½")



Nordic Tray **NEW**
0642 24.0cm (9½")



Nordic Coupe Plate
0639 28.0cm (11") **NEW**
0634 25.25cm (10")
0631 20.25cm (8")
0630 16.5cm (6½")



Stack Plate
0635 28.5cm (11¼")
0636 25.5cm (10")
0637 20.25cm (8")
Fits 0559 as a Lid
0638 16.5cm (6½")
Fits 0560 as a Lid



Round Stacking Tray
0559 20.25cm (8") Fits 0637
0560 16.5cm (6½") Fits 0638



Bowl
0484 17.5cm (7") 98.0cl (34½oz)



Bowl
0482 15.5cm (6¼") 65.5cl (23oz)



Bowl
0481 13.5cm (5¼") 45.5cl (16oz)



Bowl
0480 11.0cm (4½") 34.0cl (12oz)



City Mug
0623 34.0cl (12oz)
Fits X0042, 0158, 0218



City Mug
0624 28.5cl (10oz)
Fits X0042, 0158, 0218

Stocked in the European Warehouse.

Due to the unique hand decorated design of this range each item will be slightly different in colour and texture.

PATTERN CODE: 1205



The Nordic region has become synonymous with Chefs' skills in developing dishes that utilise the very best local ingredients and presenting them in a sympathetic and contemporary manner. Such an important culinary aesthetic deserves its own platform and the new Nordic range encompasses these shared design values. The simple but sophisticated plate profile's allow Chef's space to present dishes that can 'breathe', whilst simultaneously being framed by a deep, gently-curving rim. This enables the ultimate showcasing of some of the most innovative and influential dishes belonging to this cuisine.



Nordic Tray **NEW**
11070640 34.0cm (13½")



Nordic Tray **NEW**
11070641 29.0cm (11½")



Nordic Tray **NEW**
11070642 24.0cm (9½")



Nordic Coupe Plate **NEW**
11070639 28.0cm (11")



Nordic Coupe Plate
11070634 25.25cm (10")



Nordic Coupe Plate
11070631 20.25cm (8")



Nordic Coupe Plate
11070630 16.5cm (6½")



Rim Plate
MP300 30.0cm (11¾")
MP301 27.0cm (10⅝")
MP302 25.5cm (10")
MP303 23.0cm (9")
MP304 20.25cm (8")



Coupe Plate
MP310 30.0cm (11¾")
MP311 28.0cm (11")
MP312 25.5cm (10")
MP313 23.0cm (9")
MP314 20.25cm (8")
MP315 15.25cm (6")



Oval Coupe Plate
MP320 34.25cm (13½")



Rim Bowl Pasta
MP321 28.5cm (11") 34.0cl (12oz) Well only



Rim Soup Plate
MP323 24.0cm (9½") 31.0cl (11oz) Well only



Bowl Coupe
MP322 25.5cm (10") 120.25cl (42⅔oz)



Bowl Oatmeal
MP324 16.5cm (6½") 51.5cl (18⅓oz)



Soup Cup Stacking U/H
MP337 28.5cl (10oz) Fits MP325



Sugar Bouillon
MP338 22.75cl (8oz) Fits MP325



Mug
MP335 34.0cl (12oz) Fits MP325
MP336 8.5cl (10oz) Fits MP325



Cup Stacking
MP330 21.25cl (7½oz) Fits MP325
MP331 8.5cl (3oz) Fits MP326



Can Cup
MP332 34.0cl (12oz) Fits MP325
MP333 22.75cl (8oz) Fits MP325
MP334 8.5cl (3oz) Fits MP326



Saucer
MP325 15.25cm (6")
 Saucer D/W S/S
MP326 11.75cm (4⅝")



Jug
MP339 14.25cl (5oz)



Beverage Pot
MP340 60.0cl (21oz)
MP341 Lid of Beverage Pot



The Concorde range is imbued with the sophisticated aesthetics of classic Mid-Century styling. Clean lines and a fresh, understated tactile surface are balanced with a warm, approachable, off-white body colour to provide a casual yet crisp food presentation style.

All items are carefully designed to be discretely functional in a busy kitchen as well as providing excellent durability. Stackability is a key feature, enabling efficient storage of items, as is compatibility which allows different items to be stacked together and use a common saucer.

Using both coupe and rimmed profiles, the Concorde range provides a modern, yet functional aesthetic to showcase the very best cuisine.



*5 year edge chip warranty on products excluding: MP339, MP340, MP341.



The Terrace range brings together the look and feel of Stoneware with the timeless appeal of a simple, tactile embossment. The range utilises semi-matt glazes which pool and interact with the embossed surface to give the impression of hand-worked, semi-precious stone.

The embossment is carefully arranged to draw the eye to the centre of each piece, where the focus is on the food, framing it perfectly. In addition to a useful range of standard coupe plate sizes, Terrace comprises a full suite of bowl sizes and shapes and a comforting beverage collection.



Coupe Plate
FA020 27.0cm (10⁵/₈"")
FA041 23.5cm (9¹/₄"")
FA021 20.0cm (8"")
FA022 16.5cm (6¹/₂"")



Coupe Platter
FA023 34.0cm (13³/₄"")
FA024 29.0cm (11¹/₄"")
FA025 24.0cm (9¹/₂"")
FA026 19.0cm (7¹/₂"")



Coupe Bowl
FA027 25.5cm (10"")
FA028 21.5cm (8¹/₂"")



Deep Coupe Bowl
FA029 16.5cm (6¹/₂"")



Ramen Bowl
FA037 20.0cm (8"") 166.0cl (59oz)
FA038 17.8cm (6⁷/₈"") 109.0cl (38.5oz)
FA039 15.0cm (6"") 67.5cl (23.8oz)
FA040 12.8cm (5"") 40.5cl (14.3oz)
Fits FA034



Chip Pot
FA035 28.5cl (10oz) Fits FA032



Dipper
FA036 7.4cl (2¹/₂oz) Fits FA034



Mug
FA030 34.0cl (12oz) Fits FA032



Cup
FA031 22.75 (8oz) Fits FA032
FA033 8.5cl (3oz) Fits FA034



Saucer
FA032 16.2cm (6³/₈"")
FA034 12.5cm (4⁷/₈"")



Forager by Robert Gordon is designed with a carefully applied reactive glaze that free-flows over each shape to create a unique finish that is different on every piece. Featuring an unglazed bottom, this collection highlights the richness of raw materials through exposed stoneware and offers a handmade & organic appeal.



Plate
RG145 29.5cm (11¾")



Plate
RG146 23.8cm x 19.5cm (9½" x 7½")



Plate
RG147 19.3cm x 15.5cm (7½" x 6")



Plate
RG150 13.0cm x 1.3cm H (5" x ½" H)



Tray
RG151 34.3 x 17.3 x 6.4cm H
(13" x 6½" x 2½" H)



Tray
RG152 23.0 x 12.4 x 4.8cm H
(9" x 4½" x 1⅞" H)



Bowl
RG149 28.6cm x 4.5cm H
(11" x 1¾" H)



Bowl
RG148 22.8cm x 4.1cm H
(9" x 1⅝" H)



Stackable Bowl
RG155 21.0cm x 3.5cm H
(8¼" x 1⅜" H) 76.2cl (25¾oz)



Stackable Bowl
RG156 15.2cm x 3.5cm H
(6" x 1⅜" H) 38.4cl (13oz)



Stackable Bowl
RG157 10.2cm x 3.5cm H
(4" x 1⅜" H) 17.0cl (5¼oz)



Bowl
RG153 8.3cm x 3.5cm H
(3⅜" x 1⅜" H) 8.1cl (2¾oz)



Bowl
RG154 5.7cm x 2.5cm H
(2¼" x 1" H) 3.0cl (1oz)



Bowl **NEW**
RG166 14.9cm x 14.6cm x 5.4cm
(5⅞" x 5¾" x 2⅞") 40.0cl (14oz)



Condiment Bowl **NEW**
RG164 12.0cm x 5.0cm (4¾" x 2")
35.5cl (12½oz)



Condiment Bowl **NEW**
RG165 8.6cm x 5.0cm (3⅜" x 2")
16.0cl (5½oz)



Cup
RG158 12.1 x 8.6 x 6.4cm H
(4¾" x 3⅜" x 2½" H) 23.7cl (8oz)



Mug
RG160 12.1 x 8.6 x 8.9cm H
(4¾" x 3⅜" x 3½" H) 35.5cl (12oz)



Saucer
RG159 14.0cm (5½")
Fits RG158 & RG160



Espresso Cup **NEW**
RG161 10.0cl (3½oz)



Espresso Saucer **NEW**
RG162 12.7cm (5")



Cup Unhandled **NEW**
RG163 8.6cm x 8.9cm (3⅜" x 3½")
35.0cl (12oz)



Creamer **NEW**
RG167 7.9cm x 6.4cm x 7.0cm
(3⅜" x 2½" x 2¾") 14.0cl (5oz)

Stocked in the European Warehouse.







Due to the unique hand crafted and hand decorated design of this range each item will be slightly different in colour and texture from images shown.



Fiddle Vintage cutlery is the ultimate finishing touch to a stylish tabletop. This pattern features a modern tumbled vintage finish for those looking for traditional pieces with an industrial edge. The handle's shape resembles a fiddle (violin) with the stem like a finger-board, featuring a rustic satin vintage feel. Made from 18/10 stainless steel to provide optimum strength and excellent stain resistance.

Finish: Vintage
Gauge: 3.5mm



-  Table Knife
SX042 24.3cm
-  Steak Knife
SX056 24.3cm
-  Side Knife
SX051 22.5cm
-  Butter Knife
SX045 15.7cm
-  Table Fork
SX021 20.5cm
-  Side Fork
SX023 18.4cm

-  Soup Spoon
SX002 20.5cm
-  Dessert Spoon
SX003 18.6cm
-  Teaspoon
SX007 13.7cm
-  Coffee Spoon
SX005 10.6cm



MKS knives, created by designer Adam Simha, are the knives you will always reach for, feel compelled to care for, and never want to put down. Adam's original knife designs are based on over 20 years of knife making, his own professional kitchen experience, and the custom knives he has built for working chefs. He provides service for these knives exclusively, giving him first hand feedback on every detail from material to blade shape to edge geometry, to hardness, to hardware.

"1998 I formed MKS Design to pursue the practice of furniture and homewares design and fabrication. The knives I began making and enjoyed the most turned out to be knives for cooking, which brought me full circle back to the sphere of culinary arts." - Adam Simha.



Burlington
5797WP052
Black ABS Plastic and Polywood/Copper
Rivet Knife 10¼"



Kendall
5797WP053
Brass and Polywood/Copper
Rivet Knife 9½"



Lowell
5797WP054
Grey/White/Black and Polywood/Copper
Rivet Knife 8"

Stocked in the European Warehouse.

octa

A premium rechargeable table lamp with a magnetic charging base. This cordless table lamp provides direct downward and glare-free light. With more than 9 hours of battery life, IP65 protection (dust and water tight), it's ideal for indoor and outdoor use. The head, rod and base are made of corrosion resistant UV protected commercial grade aluminium alloy. Octa is also made with protection polyester powder coating and has no visible screws.



Octa Dark Grey LED
Rechargeable Table Light
Contains Lithium Battery
11.0cm x 28.0cm H
LMPOCT300GRY
LMPOCT300GRY6 6 Pack



Octa White LED
Rechargeable Table Light
Contains Lithium Battery
11.0cm x 28.0cm H
LMPOCT300WHT
LMPOCT300WHT6 6 Pack

pirlo

A premium rechargeable table lamp with a magnetic contact charging system. Designed with simple, intuitive controls, easily switch on and off, adjust colour, temperature and brightness. Housed in a simple, elegant, and beautiful aluminium casting. Pirlo comes with an optical design diffuser that combines numerous light reflections and refraction, producing light that is even and comfortable. Specifically designed for a commercial dinner table, it has more than 9 hours of battery life.

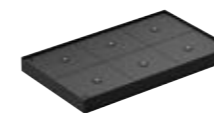


Pirlo Dark Grey LED
Rechargeable Table Light
Contains Lithium Battery
13.0cm x 27.0cm H
LMPPIR300GRY
LMPPIR300GRY6 6 Pack



Pirlo White LED
Rechargeable Table Light
Contains Lithium Battery
13.0cm x 27.0cm H
LMPPIR300WHT
LMPPIR300WHT6 6 Pack

accessories



Lampa Magnetic Charging
Tray UK PLUG
(Holds 6)
LMPTOWRUKPLUG

Lampa Magnetic Charging
Tray EU PLUG
(Holds 6)
LMPTOWREUPLUG

Stocked in the European Warehouse.



Lampa Trolley
LTROLY

Non-Stock



The Fusion Buffet System is a versatile mix of products including risers, shelves, baskets and juicers that can be outfitted with an assortment of inserts like induction ranges or grills. This system features unique, recycled teak lumber in Ash Grey, Grey Wash and Natural finishes. The look and feel of the Fusion Bakery Boxes brings upscale, rustic chic to your buffet, while its functionality offers an opportunity to bring your presentation to new heights. This system is complimented perfectly by the Square & Rectangle Metal Risers.



Bakery Box w/ Acrylic Drawer
Ash Grey Teak
36.2 x 21.6cm (L 14¼" x W 8½" H 8")
DWFBWDBDAG



Bakery Box w/ Acrylic Drawer
Grey Wash Teak
36.2 x 21.6cm (L 14¼" x W 8½" H 8")
DWFBWDBDGW



Bakery Box w/ Acrylic Drawer
Natural Teak
36.2 x 21.6cm (L 14¼" x W 8½" H 8")
DWFBWDBDT

Stocked in the European Warehouse.



beautiful display, mess-free service

Ideal for hotels, restaurants, and cafeterias, the Creations Cereal Dispensers feature an elongated tube to beautifully display and serve your favourite cereals. The rubber turn-style mechanism warrants a mess-free service, ensuring that the food won't crumble and helps control food cost. Find the perfect match for the cereal dispensers in the D.W. Haber Insulated Milk Dispensers.



Single Cereal Dispenser
7345MW116
31.8 x 24.8 x 78.7cm H
(12½" x 9¾" x 31" H)
11L (11.6qt)

Stocked in the European Warehouse.

NEW CREATIONS *hydraulic chafers*

chafing dishes at a phenomenal price point

We are pleased to bring hydraulic closing chafing dishes to the Creations collection. Each chafer has a conveniently large glass view in the lid to increase visibility of the food. This features allows for fewer opens, thus keeping the heat in and the food remains at proper serving temperature. Additionally, the easy-to-remove hydraulic lid closes on its own to ensure that food is kept safe and covered during service. Great for any buffet display, these chafers are induction capable and perfectly priced for even the most value-conscious operators.



Round Chafing Dish And Stand
7351MW107 ●
47.6 x 42.5 x 30.4cm H (18¾" x 16¾" x 12" H)
9.1L (2gal)
Round Chafing Dish
7351MW102
47.6 x 42.5 x 19.0cm H (18¾" x 16¾" x 7½" H)
9.1L (2gal)
Round Chafing Dish Stand
7351MW103
30.4 x 39.3 x 16.5cm H (12" x 15½" x 6½" H)



Rectangular Chafing Dish w/Stand
7351MW100
57.2 x 43.2 x 29.8cm H (22½" x 17" x 11¾" H)
7.6L (8qts)



Square Chafing Dish and Stand
7351MW106 ●
32.4cm x 31.1cm (12¾" x 12¼") 5.7L (6qts)
Square Chafing Dish
7351MW104 ● **NEW**
38.7 x 43.2 x 17.1cm H (15¼" x 17" x 6¾" H)
5.7L (6qts)
Square Chafing Dish Stand
7351MW105 ● **NEW**
32.4 x 31.1 x 16.5cm H (12¾" x 12¼" x 6½" H)
Square Chafing Dish Food Pan
7351MW108 ●
32.4 x 35.6 x 6.4 (12¾" x 14" x 2½" H)
5.7L (6qts)

● Stocked in the European Warehouse.

Chafing dishes include a stainless steel food pan and attachable spoon holder. Stands include a fuel holder.

● Non-Stock



Following the success of the Creations Craft White Melamine range, Steelite is proud to introduce Craft Arctic, a perfect choice for any casual or buffet setting. Alongside a curated selection of plates sits a suite of bowls that look stunning on any counter serve or buffet display. Can be used for either hot or cold food types, and with a neutral colour palette, looks at home in any environment.



Plate Coupe
68A666EL043 25.4cm (10")



Plate Coupe
68A666EL788 21.0cm (8¼")



Plate Coupe
68A666EL318 16.2cm (6⅜")



Square
68A666EL790 22.8cm (9")



Bowl
68A666EL574
21.3cm (8⅜") 120.0cl (40½oz)



Bowl
68A666EL041
18.1cm (7⅞") 70.0cl (23¾oz)



Bowl
68A666EL040
14.3cm (5⅝") 41.0cl (13¾oz)



Ramekin
68A666EL786
9.5cm (3⅞") 12.0cl (4oz)

Stocked in the European Warehouse.

simply beautiful melamine

The classic Performance Blue Dapple is now available in melamine! With a white body and faded royal blue rim, this simply beautiful collection is available in coupe plates and bowls as well as a rectangle tray. Extend your dining room service to outdoor patios and rooftops with the benefits of break resistant melamine, or mix and match with existing patterns to create a unique tabletop presentation.



Coupe Plate
7068MM304 25.4cm (10")
7068MM303 20.3cm (8")
7068MM305 15.2cm (6")



Rectangle Tray
7068MM300
30.5cm x 19.1cm (12" x 7½")



Coupe Bowl
7068MM301
25.4cm (10") 112.4cl (38oz)
7068MM302
21.6cm (8½") 79.9cl (27oz)



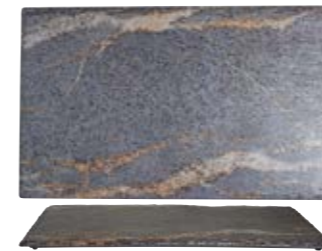
Coupe Bowl
7068MM313
16.5cm (6½") 44.4cl (15oz)
7068MM315
11.7cm (4⅝") 14.8cl (5oz)

Stocked in the European Warehouse.

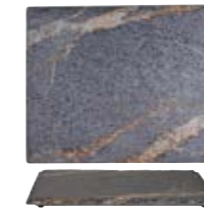


long-lasting & robust

Reminiscent of a deep blue sky and rocky mountain hillside is the Quarry collection by Creations Melamine. These hearty platters and bowls feature a unique, stone-like decal on a highly durable melamine body and are ideally sized to meet the needs of any buffet presentation.



GN 1/1 Rectangle Tray **NEW**
7192TM307 53.0cm x 32.5cm



GN 1/2 Rectangle Tray **NEW**
7192TM309 32.5cm x 26.5cm



GN 1/3 Rectangle Tray **NEW**
7192TM308 32.5cm x 17.6cm



GN 2/4 Rectangle Tray **NEW**
7192TM310 53.0cm x 16.2cm



Bowl
7192TM302A
37.5 x 32.1 x 9.2cm
(14³/₄" x 12⁵/₈" x 3⁵/₈") 520.5cl (5¹/₂ qts)



Bowl
7192TM301A
43.2 x 24.1 x 7.6cm
(17" x 9¹/₂" x 3") 260.2cl (2³/₄ qts)



Square Bowl
7192TM300A
26.03 x 24.8 x 7.6cm
(10¹/₄" x 9³/₄" x 3") 189cl (2 qts)



V Shape Bowl
7192TM303A
25.1 x 25.1 x 15.6cm
(9⁷/₈" x 9⁷/₈" x 6¹/₈") 402.2cl (4¹/₄ qts)



Platter
7192TM304A
45.7 x 22.9 x 3.8cm (18" x 9" x 1¹/₂")



Round Platter **NEW**
7192TM305 34.9cm (13³/₄")



Inspired by the fine intricacies and beauty of Sea Urchin Shells, Quill brings a new organic look to William Edwards' Signature Collection. Designed on a suite of carefully curated fine bone china profiles, Quill effortlessly frames dishes for high-end service.



Plate
AND0478 31.0cm (12¼")



Plate
AND0480 27.5cm (10¾")



Plate
AND0471 22.0cm (8¾")



Plate
AND0472 15.0cm (6")



Deep Coupe Bowl
AND0550 28.5cm (11¼")



Bowl
AND0441
24.0cm (9½") 59.7cl (21oz)



Bowl
AND0332
14.5cm x 5.2cm h (5¾" x 2" h)
35.0cl (12½oz)



Mug
AND0281
9.0cm h (3½" h) 35.0cl (12½oz)



Tea Cup
AND0436 5.4cm h (2⅛" h)
17.0cl (6oz) Fits AND0109
Tea Saucer Low
AND0109 15.0cm (6")



Teapot
AND0467
15.3cm h (6" h) 65.0cl (23oz)
Fits Teapot Infuser 82000AND1001



Milk Jug
AND0470
5.0cm h (2" h) 22.0cl (7¾oz)



Covered Sugar
AND0468
5.0cm h (2" h) 18.0cl (6½oz)





A luxurious blend of geometric design and embossment, Quanta presents a stunning understated elegance through white-on-white printing techniques, complimented with the opulence of copper mica elements. Together, this creates layers of elevated texture to showcase the finest menu creations.



Plate Copper & Grey
AND0101V1 30.0cm (11¾")
Fits Cloche L/S AND0177



Plate White
AND0101V2 30.0cm (11¾")
Fits Cloche L/S AND0177



Plate
AND0102 27.5cm (10¾")



Plate
AND0103 22.0cm (8¾")
Fits Large 3-Tier Tea Stand



Plate
AND0104 16.8cm (6½")
Fits Small 3-Tier Tea Stand &
2-Tier Plate Stand



Rectangle Tray L/S
AND0136
34.0cm x 15.0cm (13½" x 6")



Large Rim Bowl
AND0132
28.0cm x 5.7cm h
(11" x 2¼" h) 60.0cl (21oz)
Fits Cloche L/S AND0177



Rim Bowl
AND0105
22.0cm (8¾") 22.5cl (8oz)



Bowl
AND0332
14.5cm x 5.2cm h (5¾" x 2" h)
35.0cl (12½oz)



Condiment Pot
AND0249
6.5cm x 3.3cm h (2½" x 1½" h)
5.0cl (1¾oz)



Mug
AND0281
9.0cm h (3½" h)
35.0cl (12½oz)



Tea Cup Can
AND0110
6.0cm h (2½" h) 20.0cl (7oz)
Fits Saucer AND0211



Saucer
AND0211 16.0cm (6¼")



Coffee Can
AND0112
6.0cm h (2½" h) 10.0cl (3½oz)
Fits Saucer AND0152



Espresso Saucer
AND0152 12.0cm (4¾")



Oval Teapot 2 Cup
AND0337
10.0cm h (4" h) 55.0cl (19½oz)



Connoisseur Beverage Pot
AND0542
45.0cl (15¼oz)
Includes Teapot Infuser
82000AND1001



Milk Jug S/S
AND0340
9.0cm h (3½" h) 22.0cl (7¾oz)



Oval Sugar
AND0335
9.0cm h (3½" h) 22.5cl (8oz)
AND0341 Oval Sugar Lid



*view the full
william edwards collection*



Stocked in the European Warehouse.

Stocked in the European Warehouse.



The Coupe Collection showcases a smart shape providing a refined, clean aesthetic suitable for a large variety of F&B outlets. The holloware shapes allow for a full decoration pattern coverage as well as excellent functionality in service.



Coupe Plate
AND0419 ● 30.0cm (11¾")
AND0244 ● 27.0cm (10½")
AND0547 23.0cm (9") **NEW**



AND0163 ● 21.0cm (8¼")*
AND0421 ● 16.5cm (6½")**



Butter Dish
AND0295 11.0cm (4½")
Fits Cloche S/S AND0543
AND0238 8.0cm (3")



Square Tray **NEW**
AND0487
22.5cm x 22.5cm (8¾" x 8¾")



Oblong Tray **NEW**
AND0607 ●
25.3cm x 9.3cm (10" x 3¾")



Deep Coupe Bowl **NEW**
AND0550 28.5cm (11¼")



Bowl
AND0441 ●
24.0cm (9½") 59.7cl (21oz)



Large Bowl **NEW**
AND0150
23.0cm (9¼") 2ltr (70oz)



Bowl
AND0332 ●
14.5cm x 5.2cm h (5¾" x 2" h)
35.0cl (12½oz)



Bowl
AND0126
11.0cm x 5.0cm h (4¼" x 2" h)
25.0cl (9oz)
Bowl Lid
AND0127 12.0cm (4¾")



Mug
AND0281 ●
9.0cm h (3½" h)
35.0cl (12½oz)



Mug Small
AND0362
8.6cm h (3½" h)
30.0cl (10½oz)



Arabic Cup
AND0237
5.0cm h 10.0cl



Tea Cup Low **NEW**
AND0557
34.0cl (12oz) Fits AND0107



Tea Cup Low
AND0108 ●
6.5cm h (2½" h) 22.0cl (8oz)
Tea Saucer Low
AND0109 ● 15.0cm (6")



Espresso Cup Low **NEW**
AND0558
8.5cl (3oz) Fits AND0146



Tea Cup Can
AND0110 ●
6.0cm h (2½" h) 20.0cl (7oz)
Saucer
AND0211 ● 16.0cm (6¼")



Coffee Can
AND0112 ●
6.0cm h (2½" h) 10.0cl (3½oz)
Espresso Cover **NEW**
AND0650 ● Fits AND0112
Espresso Saucer
AND0152 ● 12.0cm (4¾")



Tea For One Cup
AND0411A ●
6.0cm h (2½" h) 26.0cl (9oz)
Tea For One Saucer
AND0169 ● 14.5cm (5¾")



Tea For One Teapot
AND0411B
12.4cm h (5" h) 46.0cl (16oz)



Tea For One Set
AND0411 ●
Teapot, Teacup & Saucer



Oval Teapot 4 Cup
AND0333
13.5cm h (5¼" h)
70.0cl (24½oz)



Oval Coffee Pot
AND0477
17.0cm h (6¾" h)
100.0cl (35oz)



Milk Jug L/S
AND0334 ● 10.0cm h (4" h)
35.0cl (12½oz)
Milk Jug S/S
AND0340 9.0cm h (3½" h)
22.0cl (7¾oz)



Cream/Jus Jug
AND0159
6.5cm h (2½" h)
10.0cl (3½oz)



Oval Sugar
AND0335
9.0cm h (3½" h) 22.5cl (8oz)
AND0341 Oval Sugar Lid

● Stocked in the European Warehouse.

* Fits Large 3-Tier Tea Stand. ** Fits Small 3-Tier Tea Stand & 2-Tier Plate Stand.

PATTERN CODE: 82000



United Kingdom & Republic of Ireland
Steelite International Ltd
Orme Street
Stoke-on-Trent
ST6 3RB, England
Telephone +44 (0)1782 821 000
Email headoffice@steelite.com

United States of America
Steelite International America
154 Keystone Drive
New Castle, PA 16105
Telephone +1724 856 4900
Email usa@steelite.com

Benelux
Steelite International Benelux BV
's Gravelandseweg 258
3125 BK Schiedam
Nederland
Telephone +31 (0)20 617 5915
Email info@steelite.nl

Germany
Steelite International
Deutschland GmbH
Philipp-Reis-Straße 16
64404 Bickenbach
Telephone +49 (0)6257 61950
Email germany@steelite.com

France
Telephone +33 682 574 291
Email france@steelite.com

Italy
Telephone +39 0522 902051
Email italy@steelite.com

Portugal
Rua Brito Pais, 4C - Loja - Miraflores
1495-028 Algés
Telephone +351 215 839 333
Mobile +351 918 550 429
Email jq@hotelrestaurantco.com

Scandinavia
Telephone +46 730 322 818
Email scandinavia@steelite.com

Spain
Steelite International Spain
Médico Andrés Boldó, 2
03005 Alicante
Telephone +34 966 590 300
Email spain@steelite.com

Russia, Central & Eastern Europe
CECUK Ltd
Coleridge House, Suite 47
2-3 Coleridge Gardens
London
NW6 3QH
Telephone 0044 207 435 9033
Mobile 00777 613 5088
Email rcee@steelite.com

Australia
Steelite International
Unit 45, Slough Business Park
2 Slough Avenue
Silverwater
NSW 2128
Telephone +61 (0)2 9648 4522
Email australia@steelite.com

Canada
Steelite International Canada Ltd
Unit 2, 26 Riviera Drive
Markham, Ontario
L3R5M1
Telephone +1 905 752 1074
Email canada@steelite.com

Middle East
Telephone +44 7795 173 066
Email adennis@steelite.com

Asia
Telephone +82 10 4997 7926
Email asia@steelite.com

Visit our global showrooms

London Showroom
Steelite International Ltd
75 Wells Street
2nd Floor South
London, W1T 3QH
Telephone +44 (0)1782 249 599
Email london@steelite.com

Madrid Showroom
Calle Serrano, 27, 6th Floor,
28001 Madrid
Telephone +34 910 400 870
Email madrid@steelite.com

Hong Kong Showroom
20/F. Chinachem Hollywood Center
1-13 Hollywood Road
Central, Hong Kong
Telephone +852 3906 8989
Email umesh@globalhotelware.com

US
Atlanta, Georgia
Chicago, Illinois
Los Angeles, California
Miami, Florida
New York, New York
Washington, D.C.
Youngstown, Ohio

EU
Bickenbach, Germany

AUS
Sydney, NSW

CA
Toronto, Ontario

www.steelite.com

f [steeliteinternationalEMEA](#)
X [steeliteEMEA](#)
@ [steelite_emea](#)